The image features a dark background with a grid of thin white lines. A large, light gray circular shape is partially visible in the lower right. The text 'KEENON ROBOTICS' is prominently displayed in the upper left. The word 'KEENON' is in a bold, white, sans-serif font, and 'ROBOTICS' is in a larger, bold, white, sans-serif font. A vertical blue bar is positioned to the left of the text.

KEENON ROBOTICS

KEEN ON ROBOTS, KEEN ON THE FUTURE.

KLEENBOT C55

*Professional Cleaning Robot
for Medium to Large Spaces*



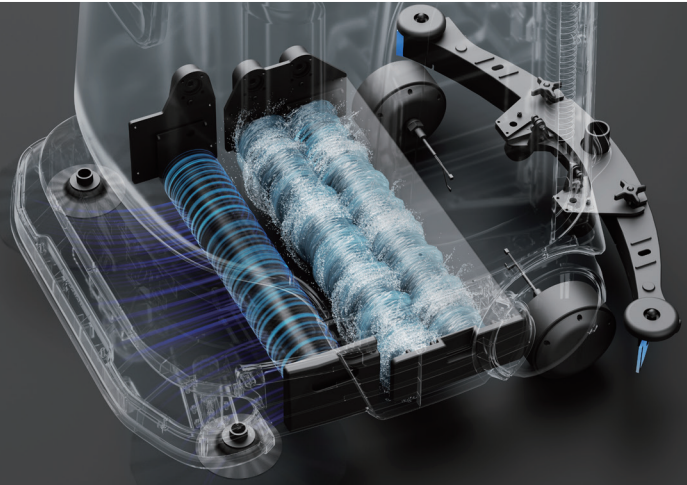
Twice the Power, One Robot Outperforms Two

Designed for indoor areas over 3,000m², providing dust mopping, debris sweeping, and deep scrubbing in one solution.

Applicable to: commercial complexes, large supermarkets & malls, factories, transportation hubs, parking garages, hospitals, and more.

Sweep & Scrub in One Two Functions, One Robot

Featuring a pioneering triple-roller design, it operates with independent sweeping and scrubbing modules. This integrated system performs sweeping followed by scrubbing in one pass, delivering superior cleaning efficiency and performance



Double Water Tank One Fill, All-Day Work

Equipped with an extra-large water tank, doubled compared with similar models in the industry. Reduces refill frequency and enables a single fill to clean an area equivalent to three football fields.



Dual-Battery System 5-Second Swap Zero Downtime

The dual-battery compartments support hot-swapping while powered on, allowing quick replacement in just 5 seconds. This completely breaks away from the inefficient cycle of "2 hours charging, 2 hours operation" common in traditional cleaning machines.



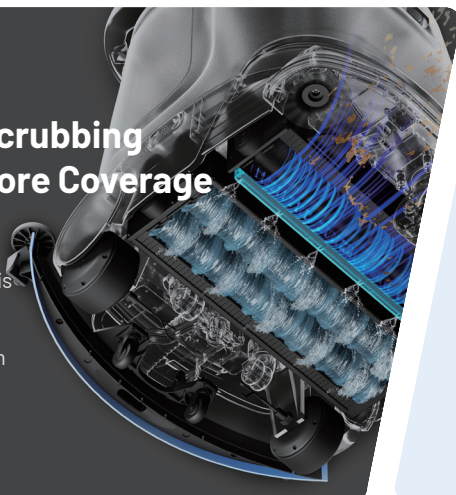
High-Performance Chassis Smoothly Overcomes Obstacles

Capable of stably crossing speed bumps up to 5 cm high, ensuring uninterrupted operation even in complex environments like underground parking garages.



Ultra-Wide Scrubbing Less Time, More Coverage

With the widest scrubbing roller in the industry, cleaning time is cut nearly in half for the same area, delivering unmatched efficiency in large-scale facilities.



Cleaning Functions Sweeping, Scrubbing, Dust Mopping

Dimensions 860(L) × 850(W) × 1082(H) mm (including squeegee)

Weight 150 kg (with battery)

Maximum Theoretical Cleaning Efficiency 2376 m²/h

Scrubbing Width 550 mm (excluding side brush)

Maximum Runtime 5 hours (supports battery swapping)

Charging Time 4 hours

Water Tanks Clean Water Tank 60 L / Waste Water Tank 47 L

KLEENBOT C40

Professional 4-in-1 Robot Floor Cleaner for Small to Medium Spaces

*Triple-Brush System for Dry-Wet Separation
Adaptable to Various Scenarios*



Designed for 500–4500m² spaces – perfect for short-pile carpets, marble, wood, tiles, vinyl, epoxy, granite & artificial stone
Ideal for: Retail Stores, Supermarkets, Office Buildings, Residential Areas, Hotels, Hospitals

Triple-Brush System for Dry-Wet Separation Sweep and Scrub in One Pass

The triple-brush system improves cleaning efficiency by 100% and adapts to carpets and mixed hard floors for continuous sweeping and scrubbing without component changes required



Fast Drying After Scrubbing

Powerful suction motor instantly removes water, preventing residue and potential safety hazards



Removable & Washable Dirty Water Tank Prevents Odors and Bacteria



5-Second Battery Swap for Continuous Operation



400mm Wide Brush for Efficient and Versatile Cleaning

Body Width: 55cm
Minimum Passage Width: 65cm
Vacuum and Scrub Width: 40cm



Multi-Modal 3D Perception for Complex Environments

Equipped with Ten Detection Components, including LiDAR, Dual Stereo Vision, Four High-Precision Line Lasers, and Three Ultrasonic Modules, Easily Handles Crowds and Irregular Obstacles



Four main functions (sweeping, vacuuming, scrubbing, and dust pushing) address diverse cleaning challenges in various environments

Suitable for: short-pile carpets, marble, wood, tiles, vinyl, epoxy, granite, and artificial stone
 Cleaning Challenges: hair, paper scraps, dust, coffee, juice, and other common debris and stains



Smart Control at Your Fingertips

App/Web Dashboard
 (Schedule tasks, receive alerts,
 track progress & generate reports)



IoT Integration



Auto-Recharge



Resume Cleaning
 from Breakpoints



Multi-Robot
 Collaboration



Robot Dimension(L × W × H)	578 × 500 × 690mm
Robot Weight	70kg (with battery)
Charging Time	2h (support quick power-change)
Battery Life	5h for scrubbing 12h for sweeping
Battery Capacity	DC 25.6V 50Ah
Cleaning Width	Sweeping: 560mm Vacuuming/Scrubbing: 400mm
Cleaning Efficiency	1100m ² /h
Clean Water Tank	16L
Waste Water Tank	14L
Dust Bag Capacity	8L



VACUUM, SWEEP, MOP

- MULTIPLE FUNCTIONS, PROFESSIONAL CLEANING •
- CONVENIENT AND USER-FRIENDLY •
- SMART AND AGILE WITH SAFETY PROTECTION • SELF CHARGING •

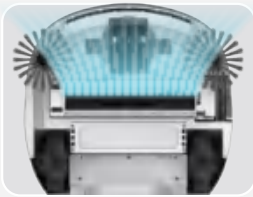


KLEENBOT C30

Comprehensive Cleanliness: Effortless Solutions for Spotless Spaces.



KEENON



Multiple Functions, Professional Cleaning

The robot can simultaneously perform sweeping, vacuuming, dust pushing, and other cleaning tasks, equipped with a powerful suction motor to clean up common garbage.



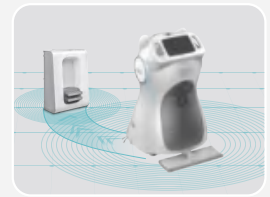
Convenient and User-Friendly

With a handle-equipped screen, a user-friendly interface and quick disassembly design, the robot is convenient to use and easy to operate.



Smart and Agile with Safety Protection

Featuring 3 Depth Stereo Vision and intelligent obstacle avoidance, the robot can maneuver agilely through crowds while ensuring operational safety.



Self Charging

Configure the robot's operating hours according to your usage schedule. It autonomously returns to recharge after shifts, ensuring optimal energy levels for worry-free operation during service hours.



Product Specifications

Dimensions

49.0 x 52.0 x 75.0 cm
(19.29" x 20.47" x 29.53")
(without dust mop)

Max. Moving Speed

0.8 m/s (2.63 ft/s)

Battery Life*

Up to 6 h (Sweeping & Vacuuming Mode)
Up to 10 h (Dust Mopping Mode)

Maximum Cleaning Width***

61.0 cm (24.02")

Maximum Suction

19000 Pa

Weight

35 kg (77 lbs), with battery
30 kg (66 lbs), without battery

Cleaning Mode

Vacuuming Mode
Dust Mopping Mode

Charging Time**

5-6 h

Cleaning Efficiency

600 m²/h (6458.35 ft²/h)

Noise

≤ 70dB

*All battery claims depend on many factors; actual results will vary. Battery has limited recharge cycles and may eventually need to be replaced. Battery life and charge cycles vary by use and settings.

**The charging time stated refers to the duration required for charging from 15% to 100% battery capacity, using either a recharger or charging pile, with the robot powered on. Do not attempt to charge a wet Robot.

***Measurement taken with Double Side Brushes + Sweeping Brush.

DINERBOT T11

Marketing Expert in Narrow-Aisle Delivery

COLLISION-FREE NAVIGATION IN NARROW AISLES



Equipped with Five Stereo Vision Sensors for Seamless Navigation Through 49cm Aisles, Improving Agility in Tight Spaces

Five Stereo Vision Sensors with VSLAM Fusion for Precise Navigation Through Ultra-Narrow Aisles



Multi-Modal 3D Vision for Safer Obstacle Avoidance in Complex Environments

Multi-Modal 3D Vision with Millisecond-Level Decision Algorithms for Smooth Navigation in Crowded Spaces, Proactively Avoiding Obstacles



Versatile Style, Adaptable to Your Preferences

Versatile Design (ears, expressions, voice) – Easily Switchable to Match Your Preferences



Smarter Advertising with a Large Display



Robot Dimension (L x W x H)	463 x 384 x 1123mm
Space of Each Layer (L x W x H)	383 x 342 x 220mm (1/2 Layer); 383 x 342 x 285mm (Bottom Layer)
Robot Weight	38kg
Load Capacity	20kg(1/2 Layer 5kg, Bottom Layer 10kg)
Moving Speed	0.1 - 1.0m/s(0.33 - 3.28ft/s) adjustable
Minimum Passable Width	49cm
Maximum Slope Angle	5°
Battery Capacity	DC25.9V, 20.8Ah



DELIVERIES WITH MULTI-MODAL INTERACTION

- FLEXIBLE AND ROBUST •
- COMPREHENSIVE OBSTACLE AVOIDANCE •
- EFFECTIVE MARKETING TOOL •
- AGILE AND ELEGANT •

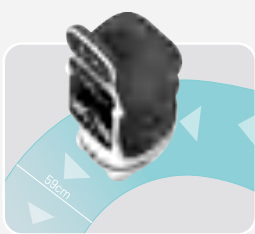


DINERBOT T10

Effortless Multitasking: Seamless Delivery and Advertising for You.

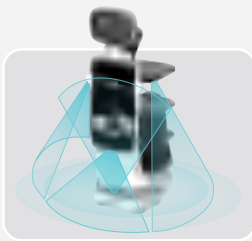


KEENON



Flexible and Robust

Equipped with open and spacious sensing trays, along with an upgraded ultra-stable chassis, the robot can navigate through narrow passages of 59cm.



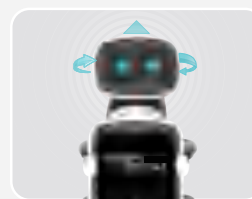
Comprehensive Obstacle Avoidance

The environmental perception and obstacle avoidance system have been significantly upgraded. This includes the use of four stereo vision sensors for 300° 3D detection, enhancing the safety of the delivery process.



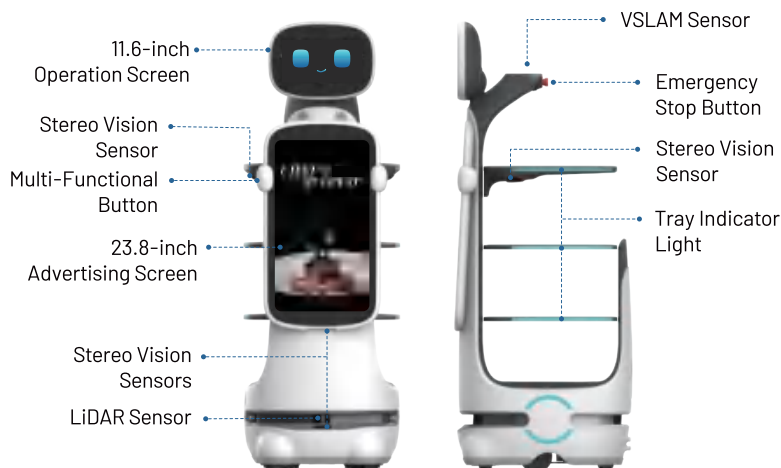
Effective Marketing Tool

Featuring a large screen for advertisements, this robot supports various custom image and video playback to effectively communicate messages.



Agile and Elegant

With a flexible movable head, unique facial expressions, and a multi-modal design incorporating voice, touch, and vision, the robot exudes agility and charm.



Product Specifications

Dimensions

48.6 x 55.5 x 139.9 cm
(19.13" x 21.85" x 54.69")

Max. Moving Speed

1 m/s (3.28 ft/s)

Charging Time**

5.5 h

Total Load Capacity

40 kg (88 lbs)

Minimum Passage Width

59.0 cm (23.23")

Weight

58 kg (128 lbs)

Battery Life*

Up to 8 h

Layer Size (default)

Layer 1/2/3:
48.6 x 41.6 cm (19.13" x 16.38")

Bottom Layer:
35.0 x 28.6 cm (13.78" x 11.26")

Touch Screen Size

11.6" (1920 x 1080)

*All battery claims depend on many factors; actual results will vary. Battery has limited recharge cycles and may eventually need to be replaced. Battery life and charge cycles vary by use and settings.

** The charging time stated refers to the duration required for charging from 15% to 100% battery capacity, using either a recharger or charging pile, with the robot powered on. Do not attempt to charge a wet Robot.



DELIVERIES WITH HIGH-LOAD CAPACITY

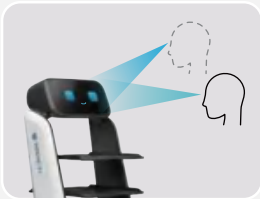
- USER-FRIENDLY INTERACTION
- SMOOTH AND RELIABLE DELIVERIES
- EXCEPTIONAL LOAD CAPACITY
- SELF CHARGING



DINERBOT T9

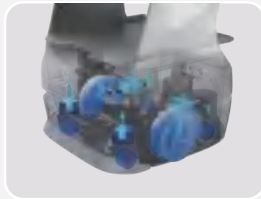
**Upgraded
Interface:
Your Dependable
and Economical
Choice.**

KEENON



User-Friendly Interaction

Featuring an 11.6-inch HD touchscreen and ergonomic design, the system ensures easy operation for both staff and customers. Staff can navigate the robot while standing, and customers can control it from their seats.



Smooth and Reliable Deliveries

The next-gen shock-absorbing chassis employs a multi-link damping system for obstacle-crossing stability across diverse terrains. Enhanced by a novel PID control algorithm, the robot accelerates, brakes, and turns seamlessly, ensuring a steady delivery.



Exceptional Load Capacity

With an impressive load capacity of 4*10kg and an adjustable tray design, the robot caters to a wide range of delivery demands with ease.



Self Charging

Configure the robot's operating hours according to your usage schedule. It autonomously returns to recharge after shifts, ensuring optimal energy levels for worry-free operation during service hours.



Product Specifications

Dimensions

50.0 x 52.7 x 126.6 cm
(19.69" x 20.75" x 49.84")

Max. Moving Speed

0.8 m/s (2.63 ft/s)

Charging Time***

4 h

Total Load Capacity

40 kg (88 lbs)

Weight*

63 kg (139 lbs)

Battery Life**

Up to 18 h

Layer Size

49.0 x 40.4 cm (19.29" x 15.91")

Minimum Passage Width

70 cm (27.56")

*Charging pile is not included.

**All battery claims depend on many factors; actual results will vary. Battery has limited recharge cycles and may eventually need to be replaced. Battery life and charge cycles vary by use and settings.

***The charging time stated refers to the duration required for charging from 15% to 100% battery capacity, using either a recharger or charging pile, with the robot powered on. Do not attempt to charge a wet Robot.



SWIFT AND AGILE DELIVERIES

- COMPACT, FOR ENHANCED AGILITY •
- SMART SELF-PICKUP GUIDANCE •
- MULTI-ROBOT COLLABORATION •

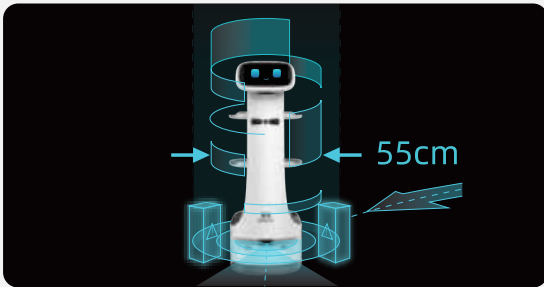


DINERBOT T8

Compact Efficiency at Your Service: Agile Handling for Seamless Deliveries.

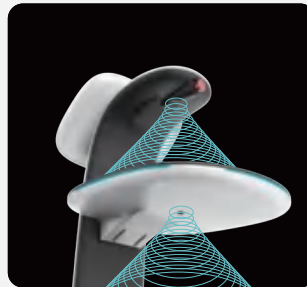


KEENON



Compact, for Enhanced Agility

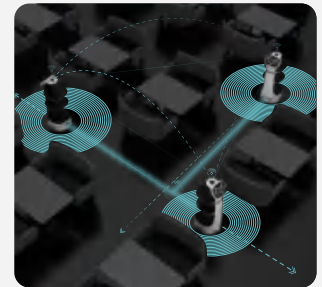
Our compact robot can easily navigate through spaces as narrow as 55cm, making it highly maneuverable even in cozy environment.



Smart Self-Pickup Guidance*

With the installation of tray detection sensors and 300-degree open tray, T8 DINERBOT guides you to retrieve your orders through voice notifications and visual guidance on the 10.1-inch touch screen, effectively preventing retrieval errors and reminders.

**Not available on T8 LB model*



Multi-Robot Collaboration

Our robust planning system enables seamless collaboration among multiple robots, amplifying efficiency and delivering an enhanced service experience.



Product Specifications

Dimensions

38.4 x 46.8 x 111.1 cm
(15.12" x 18.43" x 43.74")

Max. Moving Speed

1.0 m/s

Charging Time**

T8 LS: 4.5 h / T8 LB: 4 h

Layer Size

The Upper Two Layers:
38.3 x 34.2 cm (15.08" x 13.46")

The Bottom Layer:
32.5 x 31.8 cm (12.80" x 12.52")

Weight

T8 LS: 34 kg (74.96 lbs)
T8 LB: 38 kg (83.78 lbs)

Battery Life*

T8 LS: Up to 15 h / T8 LB: Up to 18 h

Number Of Layers (default)

3

Total Load Capacity

20 kg (88 lbs)

Minimum Passage Width

55 cm (21.65")

*All battery claims depend on many factors; actual results will vary. Battery has limited recharge cycles and may eventually need to be replaced. Battery life and charge cycles vary by use and settings.

**The charging time stated refers to the duration required for charging from 15% to 100% battery capacity, using either a recharger or charging pile, with the robot powered on. Do not attempt to charge a wet Robot.



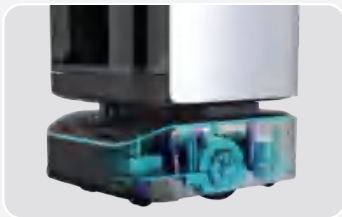
**DELIVERIES WITH
ENCLOSED
PROTECTION**



- ALL-NEW SHOCK ABSORBING CHASSIS •
- 180L CAPACITY •
- ONE-STEP OPERATION: AUTOMATIC DOORS •

DINERBOT T3

Enclosed Protection: Elevating Clean and Secure Deliveries.



All-New Shock Absorbing Chassis

Shock-absorbing chassis is here, with an increased smoothness and the ability to adapt to even more complex environments. It boasts centimeter-level stability and prevents dish and beverage spillage while in travel.



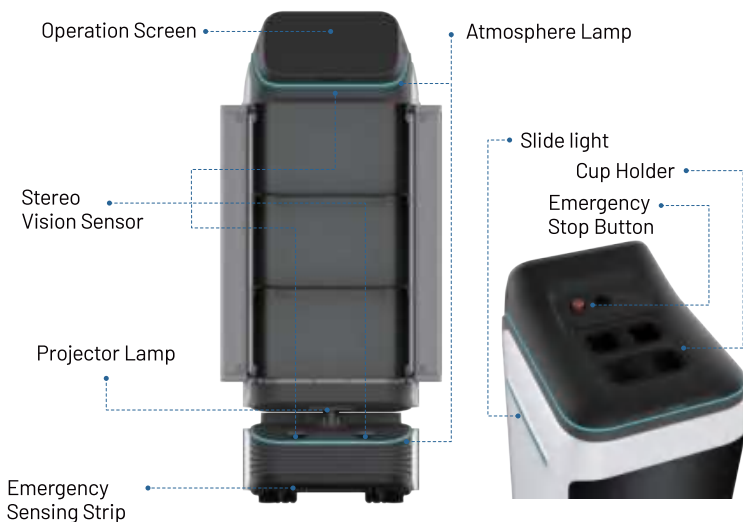
180L Capacity

Designed for high-end restaurants and bars, the robot can deliver large dishes, and each shelf can hold three standard trays of food.



One-Step Operation: Automatic Doors

Doors automatically open at the origin point and can be controlled by stepping on the projection at the destination point, enabling convenient delivery and prompt dish return.



Product Specifications

Dimensions

48.9 x 62.3 x 134.1 cm
(19.25" x 24.53" x 52.80")

Weight

71 kg (156 lbs)

Max. Moving Speed

0.8 m/s (2.63 ft/s)

Battery Life*

Up to 12 h

Layer Size

42.2 x 57.5 cm
(16.61" x 22.64")

Cabin Volume

57.5 x 42.2 x 69.0 cm
(22.64" x 16.61" x 27.17")

Total Load Capacity

40 kg (88 lbs)

Minimum Passage Width

75 cm (29.53")

*All battery claims depend on many factors; actual results will vary. Battery has limited recharge cycles and may eventually need to be replaced. Battery life and charge cycles vary by use and settings.



PRIVATE, CROSS-FLOOR DELIVERIES

- *ULTRA-LARGE CAPACITY*
- *INGENIOUS DESIGN*
- *INTELLIGENT OBSTACLE AVOIDANCE*



BUTLERBOT W3

Smart Delivery Assistant: IoT-Enhanced Convenience at Your Service.



Ultra-Large Capacity for Higher Delivery Efficiency

90 L ultra-large capacity and a variety of accessories, effortlessly meeting diversified delivery needs
Multi-compartment design that improves usage rate, increasing delivery efficiency by up to 300%
Up to 120 deliveries in a day, drastically reducing operation cost



Dual Stereo Vision & 3D Intelligent Obstacle Avoidance

Wide-angle 3D obstacle avoidance function, holding a panoramic view of every obstacle
Flagship high-accuracy survey LiDAR covering 270°, always guiding to the destination with accurate navigation
Optimal avoidance and remarkable continuous bend passability, conquering any complex environment

Ingenious Design Combining Technology and Practicability

Streamlined and sophisticated body design
11.6-inch ultra-large HD touchscreen serves both as a welcoming receptionist and an eye-catching advertisement



Product Specifications

Dimensions

45.9 x 54.9 x 108.1 cm
(18.07" x 21.61" x 42.56")

Max. Moving Speed

0.8 m/s (2.63 ft/s)

Charging Time**

6.5 h

Cabin Size

39.0 x 38.5 x 30.0 cm
(15.35" x 15.16" x 11.81")

Multi-point Delivery

Up to 4 rooms (Single journey)

Weight

48 kg (106 lbs)

Battery Life*

Up to 12 h

Number of Cabins

2 / 3 / 4

Total Load Capacity

20 kg (44 lbs)

Minimum Passage Width

70 cm (27.56")

*Assuming 3 deliveries per hour and 5 minutes for each delivery. All battery claims depend on many factors; actual results will vary. Battery has limited recharge cycles and may eventually need to be replaced. Battery life and charge cycles vary by use and settings.

**The charging time stated refers to the duration required for charging from 15% to 100% battery capacity, using either a recharger or charging pile, with the robot powered on. Do not attempt to charge a wet Robot.



KEENON Robotics Co., Ltd.



www.keenon.com



global@keenon.com



HEAVY-LOAD COURIER ROBOT

- 100KG+ LOAD CAPACITY •
- PLUG-AND-PLAY •
- 24/7 DELIVERY, NONSTOP EFFICIENCY •
- OPERATION SAFETY, MAXIMIZED •



KEENON S100

Effortless 100kg+ Delivery: Redefining Industrial Mobility.



KEENON



100kg+ Load Capacity

Reliably transport light loads, facilitating the movement of bulky goods across your workspace.



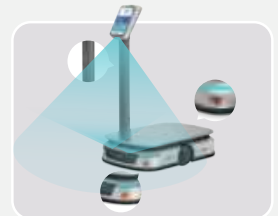
Plug-and-Play

Powered by pre-installed OS and App, S100 offers ready-to-use solutions for instant robot deployment.



24/7 Delivery, Nonstop Efficiency

3 charging options: charging pile, adapter, & 15s-to-swap battery ensures around-the-clock delivery.



Operation Safety, Maximized

360° obstacle avoidance, anti-collision strip, and 3 emergency stop buttons make sure of it.

Image Positioning Module

Touch Display Panel

Emergency Stop Buttons (x3)
*One on the head and two on the chassis

Stereo Vision Sensors (x3)

LiDAR Sensors (x2)

360° Anti-Collision Strip



Customizable Shelf

*Multiple shelves with precise hole positions
Standard version can accommodate 4 standard material boxes (600mm*400mm*350mm)

Battery Swapping Design
*8-hour battery life on a single charge

Drive Motors (x2)

Product Specifications

Dimensions

92.5 x 62.0 x 128.2 cm
(36.42" x 24.41" x 50.47")

Max. Moving Speed

1 m/s (3.28 ft/s)

Charging Time**

2.5 h

Weight

87.5 kg (192.9 lbs)

Total Load Capacity

100 kg+ (220 lbs+)

Battery Life*

Up to 8 h

Standard Shelf Size

86.5 x 60.0 x 80.0 cm
(34.06" x 23.62" x 31.50")

Minimum Passage Width

90 cm (29.53")
- without rotation

*All battery claims depend on many factors and operating conditions (<100kg); actual results will vary. Battery has limited recharge cycles and may eventually need to be replaced. Battery life and charge cycles vary by use and settings.

** The charging time stated refers to the duration required for charging from 0% to 100% battery capacity, using either a recharger or charging pile, with the robot powered on. Do not attempt to charge a wet Robot.

KEENON S300

HEAVY-LOAD INTELLIGENT

DELIVERY ROBOT

Tackle heavy-duty delivery demands across all scenarios, and achieve efficient and accurate intelligent handling.

Ideal for factories, hotels, supermarkets, warehouses, hospitals, and more.



KEENON



A Single Touch Lifts 300 kg Making Heavy Delivery Easy

A industry-low 23 cm chassis and a powerful lift built to smoothly tackle 300 kg loads.



Dynamic Auto-planning Instant Response

AI-powered path planning, adapts in milliseconds to avoid obstacles on the move.



Offline Control, Uninterrupted Operation

Operates offline, standalone, no Wi-Fi or 5G required.



Flexible Deployment Quick Setup Without Hassles

True plug-and-play deployment: no facility changes, operational in 1 day.

360° Safety Shield: Operate with Peace of Mind

Powered by an advanced fusion of 3D vision, dual LiDAR, and VSLAM navigation – backed by triple emergency stops – our system proactively prevents collisions and keeps operations running safely and smoothly.



Dimensions (L × W × H)	925 × 640 × 1282 mm
Weight	115 kg (including battery)
Max. Payload	300kg
Battery Life	Up to 6 h
Charging Time	3.5h
Chassis Ground Clearance	23 cm

KEENON



KEENON
KEENON Robotics

global@keenon.com

www.keenon.com

Building 56, No. 1000 Jinhai Road,
Pudong District, Shanghai

@keenonrobotics_official



@KEENON Robotics



@KEENONRobotics



@KEENON Robotics

